

vtech®

Parent's Guide

Pop-a-ball®

Pop & Play Tower



91-003543-007 (UK)

**VTech understands that a child's needs and abilities change as they grow and with that in mind we develop our toys to teach and entertain at just the right level...**

## **E**lectronic Learning Computers

**Cool, aspirational and inspiring computers for curriculum related learning**

### **I need...**

...challenging activities that can keep pace with my growing mind

...intelligent technology that adapts to my level of learning

...National Curriculum based content to support what I'm learning at school

## **Pre-School**

**Interactive toys to develop their imagination and encourage language development**

### **I want...**

...to get ready for school by starting to learn the alphabet and counting

...my learning to be as fun, easy and exciting as can be

...to show my creativity with drawing and music so my whole brain develops

## **vtech Baby**

**Toys that will stimulate their interest in different textures, sounds and colours**

### **I am...**

...responding to colours, sounds and textures

...understanding cause and effect

...learning to touch, reach, grasp, sit-up, crawl and toddle

**Birth-36 months**



**3-6 years**



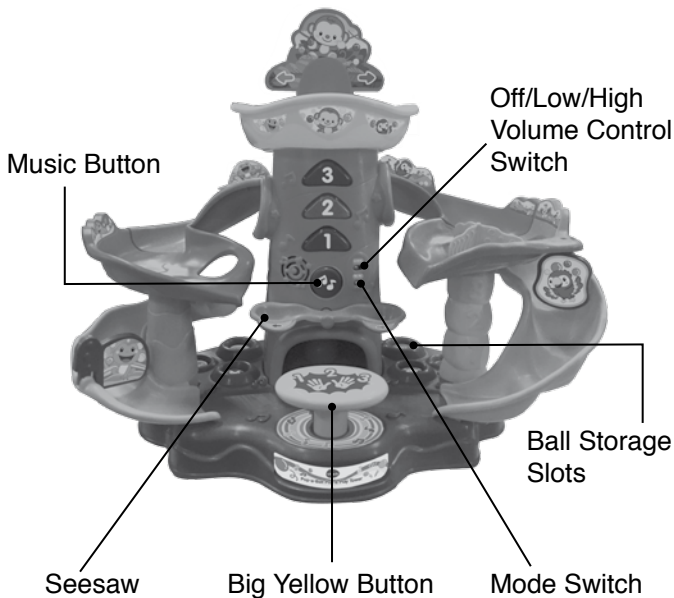
**4-10 years**



To learn more about this and other VTech® products, visit [www.vtech.co.uk](http://www.vtech.co.uk)

# INTRODUCTION

Thank you for purchasing the **VTech® Pop-a-Ball® Pop & Play Tower**. This interactive ball tower features six multicoloured balls, twisting slides and cheerful animals that make playtime even more fun! Press the big yellow button to launch the balls up the tower, where they'll pop out of three different locations and roll down the slides! This tower is great for sitting down or standing play! It's popping time!



# INCLUDED IN THIS PACKAGE



A. One support base



B. One electronic tower



C. One C-shaped lower track



D. One curved middle track



E. One curved upper track



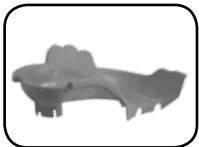
F. One track support tube



G. One curved lower stair track



H. One middle track with spinner



I. One curved upper track



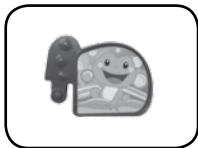
J. One ball basin



K. One monkey



L. One ball ramp



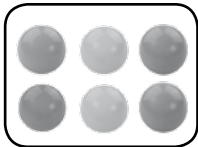
M. One frog ball stopper



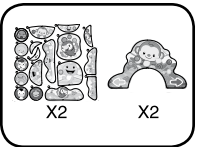
N. One bird



O. One seesaw



P. Six multicoloured balls



Q. Four label sheets



R. One parent's guide

**WARNING:**

**All packing materials such as tape, plastic sheets, packaging locks, removable tags, cable ties and packaging screws are not part of this toy, and should be discarded for your child's safety.**

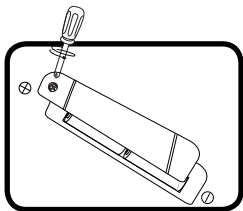
**NOTE:**

**Please keep this parent's guide as it contains important information.**

# GETTING STARTED

## BATTERY INSTALLATION

1. Make sure the unit is turned **OFF**.
2. Locate the battery cover on the back of the unit. Use a screwdriver to loosen the screw.
3. Install 2 new AA (LR6/AM-3) batteries following the diagram inside the battery box. (The use of new alkaline batteries is recommended for maximum performance).
4. Replace the battery cover and tighten the screw to secure.



## BATTERY NOTICE

- Use new alkaline batteries or fully charged NI-MH (Nickel Metal-hydride) rechargeable batteries for best performance.
- Use only batteries of the same or equivalent type as recommended.
- Do not mix different types of batteries: alkaline, standard (carbon-zinc) or rechargeable, or new and used batteries.
- Do not use damaged batteries.
- Insert batteries with the correct polarity.
- Do not short-circuit the battery terminals.
- Remove exhausted batteries from the toy.
- Remove batteries during long periods of non-use.
- Do not dispose of batteries in fire.
- Do not charge non-rechargeable batteries.
- Remove rechargeable batteries from the toy before charging (if removable).
- Rechargeable batteries are only to be charged under adult supervision.

## Disposal of batteries and product



The crossed-out wheeled bin symbols on products and batteries, or on their respective packaging, indicates they must not be disposed of in domestic waste as they contain substances that can be damaging to the environment and human health.

The chemical symbols Hg, Cd or Pb, where marked, indicate that the battery contains more than the specified value of mercury (Hg), cadmium (Cd) or lead (Pb) set out in Battery Directive (2006/66/EC).



The solid bar indicates that the product was placed on the market after 13th August, 2005.

Help protect the environment by disposing of your product or batteries responsibly.

For more information, please visit:

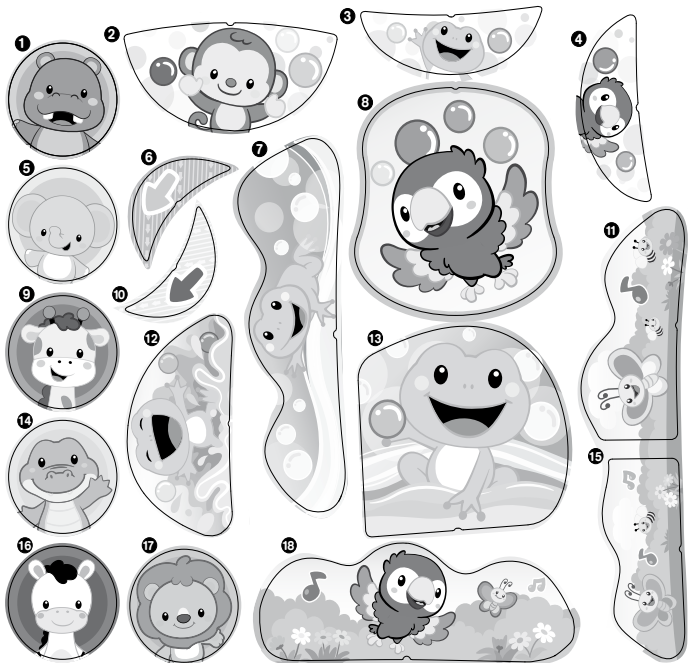
[www.recycle-more.co.uk](http://www.recycle-more.co.uk)

[www.recyclenow.com](http://www.recyclenow.com)

With the **Pop-a-Ball® Pop & Play Tower**, safety comes first. To ensure your child's safety, adult assembly is required. Please carefully follow the assembly instructions below and make sure the final assembly is correct. Adult supervision is recommended.

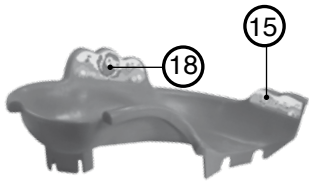
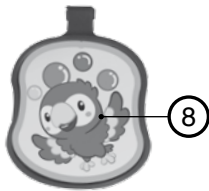
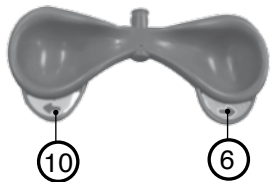
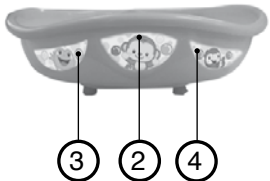
# LABEL INSTRUCTIONS

Please securely stick the labels to the play set as indicated below.





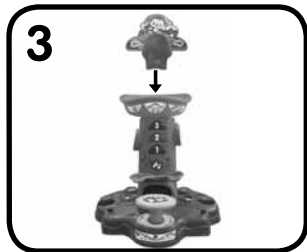
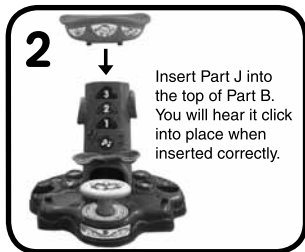
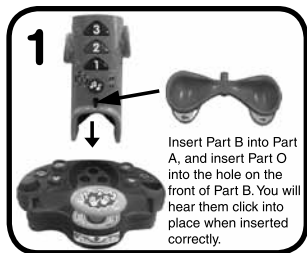
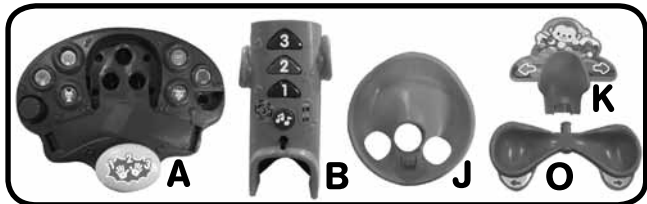
1 5 9 14 16 17



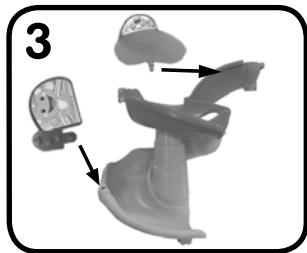
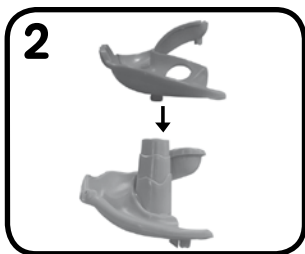
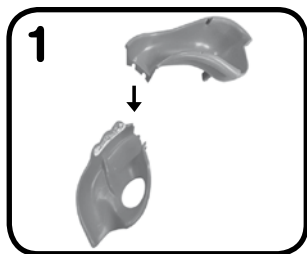
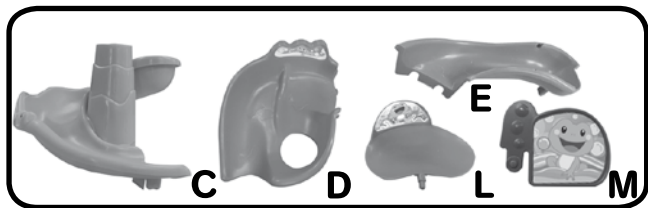
# ASSEMBLY INSTRUCTIONS

Assemble the parts in the different zones first, then assemble the zones together to complete the assembly.

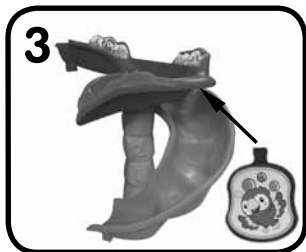
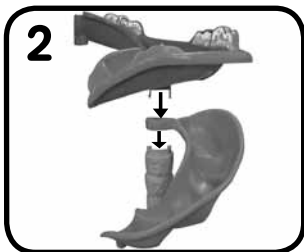
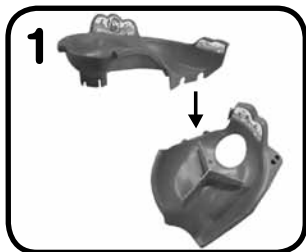
## Step 1: Trunk Assembly A + B + J + K + O



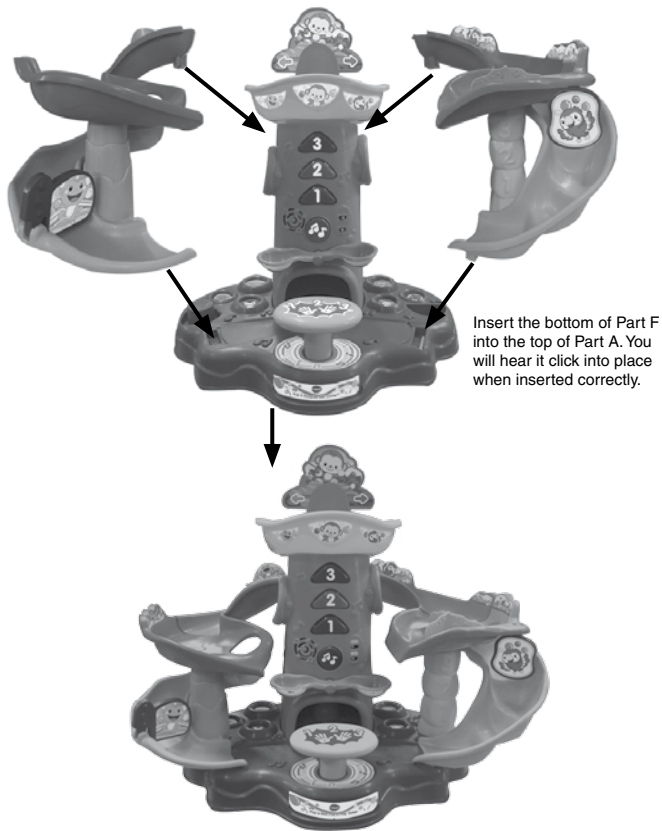
## Step 2: Left Track Assembly C + D + E + L + M



**Step 3: Right Track Assembly F + G + H + I + N**



Combine the assembled parts from steps 1-3. If assembled correctly, the finished product should look like the below image.



# PRODUCT FEATURES

## 1. Off/Low/High Volume Control Switch

To turn the unit **ON**, slide the **Off/Low/High Volume Control Switch** to the **Low Volume** (🔊) or **High Volume** (🔊🔊) position. To turn the unit **OFF**, slide the **Off/Low/High Volume Control Switch** to the **OFF** (●) position.



## 2. Mode Switch

Slide the **Mode Switch** to the **Learning Mode** (📖) or the **Music Mode** (🎵) position to choose a mode of play.



## 3. Automatic Shut-Off

To preserve battery life, the **Pop-a-Ball® Pop & Play Tower** will automatically power down after approximately 1 minute without input. The unit can be turned on again by pressing any button.

**NOTE:** If the unit powers down while playing, we suggest changing the batteries.

The infrared light sensors on the ball slides are sensitive to sunlight. The sensors may not perform properly in brightly lit, sunny rooms or under direct sunlight.

# ACTIVITIES

## 1. Big Yellow Button

Press the **Big Yellow Button** to play a variety of silly sounds and phrases. When the balls are loaded into the base of the tower, press the **Big Yellow Button** three times to pop the balls out of the tower. The balls will surprise you by randomly popping out the top or sides of the tower. The lights on the tower will flash with the sounds.



### **WARNING:**

Do not use anything other than the balls included with this product in the base of the trunk or on the ball slides. Adult supervision is recommended.

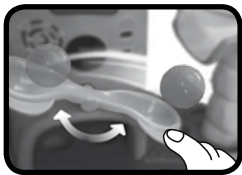
## 2. Music Button

Press the **Music Button** on the tower to learn about colours and animals and to hear entertaining songs in Learning Mode. In Music Mode you will hear melodies and songs. The lights on the tower will flash with the sounds.



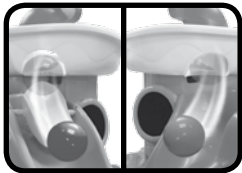
### 3. Seesaw

Press down on the **Seesaw** to launch the balls onto the ball slide and to learn about opposites through playful phrases and sounds in Learning Mode. In Music Mode you will hear silly sounds and music. The lights on the tower will flash with the sounds.



### 4. Slide Triggers

Drop the balls through the holes in the ball basin to activate the **Slide Triggers**. You will hear playful phrases, music and sounds. The lights on the tower will flash with the sounds.



### **WARNING:**

Do not put hands, arms and feet inside any of the ball slots. Adult supervision is recommended.





# SING-ALONG SONG LYRICS

## Song 1

Red, orange and yellow,  
So many colours playing peek-a-boo!  
Green, purple and blue,  
Rolling and popping, yahoo!

## Song 2

Poppity, poppity, pop!  
Whenever will it stop?  
The balls roll down,  
All around,  
Poppity, poppity, pop!

## Song 3

Learning numbers! Come count with me.  
1, 2, 3, 4, 5,  
6, 7, 8, 9, 10!

## Song 4

Cute little monkey living in the jungle.  
He swings from tree to tree.  
Let's play in the jungle, just you and me,  
We can twist and bounce and play!

## **MELODY LIST**

1. Aba Daba Honeymoon
2. Cockles and Mussels
3. Shoo Fly, Don't Bother Me
4. Oh When the Saints Go Marching In
5. Yankee Doodle
6. Polly Wolly Doodle
7. ABC Tumble Down D
8. Did You Ever See a Lassie?
9. Here We Go Looby Loo
10. Chicken Reel
11. Daring Young Man on the Flying Trapeze
12. Turkey in the Straw
13. Aiken Drum
14. Ta-Ra-Ra Boom De-Ay
15. Goosey, Goosey Gander

## **CARE & MAINTENANCE**

1. Keep the unit clean by wiping it with a slightly damp cloth.
2. Keep the unit out of direct sunlight and away from any direct heat sources.
3. Remove the batteries when the unit is not in use for an extended period of time.
4. Do not drop the unit on a hard surface and do not expose the unit to excess moisture.
5. We recommend playing with this toy on a flat, stable surface.
6. To avoid injuries, keep all body parts away from the three ball exit points.
7. Never aim the tower toward another person.
8. Don't put hands or feet under the big yellow button. Adult supervision is recommended.

# TROUBLESHOOTING

If for some reason the program/activity stops working, please follow these steps:

1. Turn the unit **OFF**.
2. Interrupt the power supply by removing the batteries.
3. Let the unit stand for a few minutes, then replace the batteries.
4. Turn the unit back **ON**. The unit will now be ready to play with again.
5. If the unit still does not work, install a brand new set of batteries.

If the problem persists, please call our Consumer Services Department on 0330 678 0149 (from UK) or +44 330 678 0149 (outside UK) and a service representative will be happy to help you.

## **IMPORTANT NOTE:**

Creating and developing **VTech**<sup>®</sup> products is accompanied by a responsibility that we at **VTech**<sup>®</sup> take very seriously. We make every effort to ensure the accuracy of the information, which forms the value of our products. However, errors sometimes can occur. It is important for you to know that we stand behind our products and encourage you to call our Consumer Services Department on 0330 678 0149 (from UK) or +44 330 678 0149 (outside UK), with any problems and/or suggestions that you might have. A service representative will be happy to help you.

**CLASS 1  
LED PRODUCT**

# CONSUMER SERVICES

Creating and developing VTech products is accompanied by a responsibility that we at **VTech®** take very seriously. We make every effort to ensure the accuracy of the information, which forms the value of our products. However, errors sometimes can occur. It is important for you to know that we stand behind our products and encourage you to call our Consumer Services Department with any problems and/or suggestions that you might have. A service representative will be happy to help you.

## **UK Customers:**

Phone: 0330 678 0149 (from UK) or +44 330 678 0149 (outside UK)

Website: [www.vtech.co.uk/customer support](http://www.vtech.co.uk/customer-support)

## **Australian Customers:**

Phone: 1800 862 155

Website: [support.vtech.com.au](http://support.vtech.com.au)

## **NZ Customers:**

Phone: 0800 400 785

Website: [support.vtech.com.au](http://support.vtech.com.au)

# PRODUCT WARRANTY/ CONSUMER GUARANTEES

## **UK Customers:**

Read our complete warranty policy online at [vtech.co.uk/warranty](http://vtech.co.uk/warranty).

## **Australian Customers:**

VTECH ELECTRONICS (AUSTRALIA) PTY LIMITED –  
CONSUMER GUARANTEES

Under the Australian Consumer Law, a number of consumer guarantees apply to goods and services supplied by VTech Electronics (Australia) Pty Limited. Please refer to [vtech.com.au/consumerguarantees](http://vtech.com.au/consumerguarantees) for further information.

**Visit our website for more  
information about our products,  
downloads, resources and more.**

***www.vtech.co.uk***  
***www.vtech.com.au***



TM & © 2018 VTech Holdings Limited.  
All rights reserved.  
**Printed in China.**  
91-003543-007 (B)